



EVERY[™] ROUTE.

ISM



**FOR URBAN TRANSIT BUS AND
MOTORCOACH APPLICATIONS**

URBAN TRANSIT BUS AND MOTORCOACH APPLICATIONS.



Every Time.

With hundreds of millions of miles of operation in bus fleets worldwide, Cummins ISM has earned its reputation for reliability and durability. The 2007 ISM is an evolution of this proven product. Key technologies like the cooled-EGR subsystem, VG Turbo and electronic fuel injection have been used on the ISM since 2002. Even the newest emissions control technology, particulate filtration, is not new. Thousands of Cummins-powered buses equipped with Cummins Particulate Filters are in operation in North America today. Every Cummins system is designed with reliability in mind. The Variable Geometry turbocharger, for example, has only one moving part in the hot exhaust stream, greatly reducing potential problems. The ISM is ready the first time, every time.

Every Dollar.

Higher fuel costs are stretching already tight operating budgets. Transit and motorcoach operators can turn to the Cummins ISM to control and reduce costs. The ISM has best-in-class fuel economy in the bus market and low maintenance costs. Plus, at 10.8L, the ISM is the largest urban transit engine on the market. It has been known to run over three-quarters of a million miles in urban transit routes before first overhaul. The Cummins ISM helps your budget stretch further.

Every Route.

Whether your business is motorcoach or urban transit, the ISM is available in the configuration you require. The 2007 ISM has ratings of 280 hp or 330 hp for 40- or 60-foot transit buses. The ISM is also available with a 450-hp rating for motorcoach applications. It is compatible with all major transmission models and is easily tailored to the needs of a specific bus or motorcoach application. Every bus, every route.



Ratings

ENGINE MODEL	ADVERTISED HORSEPOWER	PEAK TORQUE	GOVERNED SPEED
ISM 450*	450	1550 @ 1200 RPM	2100 RPM
ISM 330**	330	1150 @ 1200 RPM	2100 RPM
ISM 280**	280	925 @ 1200 RPM	2100 RPM

*Motorcoach rating

**Urban bus rating

Specifications

ADVERTISED HORSEPOWER	280-450 HP	209-335 kW
PEAK TORQUE	925-1550 LB-FT	1254-2101 N•M
GOVERNED SPEED	2100 RPM	
CLUTCH ENGAGEMENT TORQUE	700 LB-FT	949 N•M
NUMBER OF CYLINDERS	6	
OIL SYSTEM CAPACITY	10.2 U.S. GALLONS	38.6 LITERS
NET SYSTEM WEIGHT	2,268 LB	1,028 KG
ENGINE	2,206 LB	1,000 KG
AFTERTREATMENT*	62 LB	28 KG

*Increase over standard muffler

Keeping Budgets In Line.

The ISM will deliver comparable fuel economy to EPA-02 compliant and certified products. This, along with the longest service intervals in its class and easy maintenance, adds up to big savings, every mile.

Options That Save Money. Every Mile.

- Cummins C Brake™ by Jacobs® turns your energy-producing engine into an energy-absorbing compressor, with up to 345 braking horsepower to slow your motorcoach down considerably. Service brakes last longer and tire life is extended.
- WABCO air compressors come standard on Cummins engines with an optional 30.4-cfm model.
- Water-in-fuel sensor alerts driver to a sign of possible water in the fuel filter, contamination that could cause performance and durability problems.
- Cummins-branded electronic starters and alternators, which are covered under the engine warranty.

Key Electronic Features.

The ISM electronic hardware and software use a common architecture with all other Cummins engines. So it has all the latest diagnostics, maintenance monitoring and engine protection features with customer selectable shutdown. Its full-authority electronic controls include:

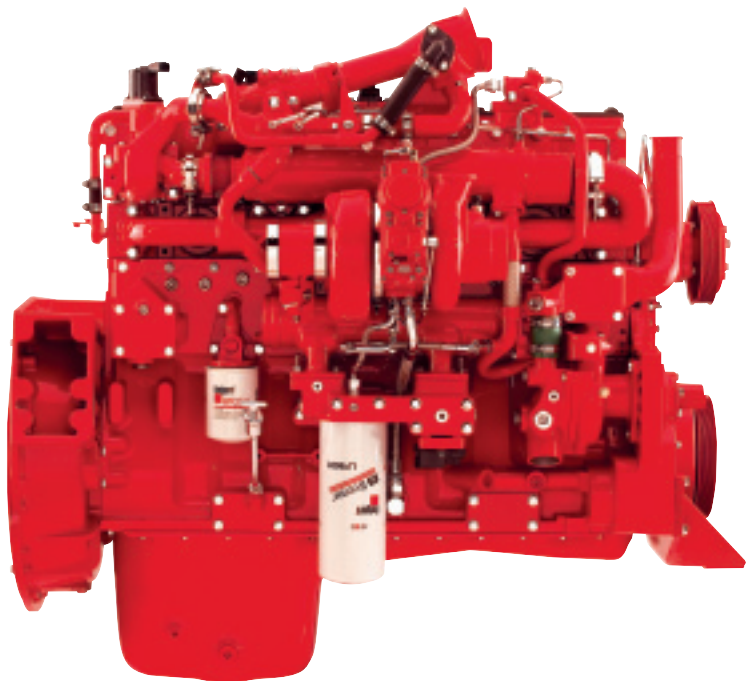
- Idle Control – Environmentally friendly feature manages idling time and improves fuel economy.
- Door Interlock – Provides additional passenger security.
- Starter Lockout – Provides additional engine/starter protection.
- Engine Protection – Regulates rpm to reduce the risk of progressive damage when a severe fault code is logged.
- Electronic Monitoring of Cummins Particulate Filter – ECM constantly monitors filter pressure, initiating regeneration as needed.

Dependable Performance. Every Day Of Every Year.

- Self-tensioning belt drive system drives both fan and alternator for reduced maintenance and increased belt life.
- Mid-stop cylinder liner minimizes oil consumption and increases durability.
- Articulated piston design featuring forged-steel crown and aluminum skirt allows for higher top ring position, optimizing fuel efficiency.

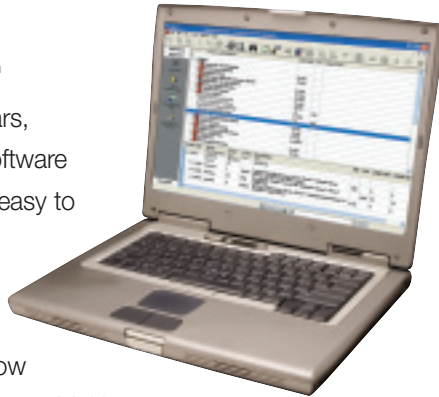
ISM Maintenance Intervals.

	MILES KILOMETERS	HOURS	MONTHS
OIL AND FILTER	9,500 15,000	300	6
FUEL FILTER	15,000 24,000	300	6
COOLANT FILTER	15,000 24,000	300	6
VALVE ADJUSTMENT	120,000 192,000	3,000	24
COALESCING FILTER	EVERY 3RD TO 4TH OIL CHANGE		
PARTICULATE FILTER	200,000-400,000 MI (320,000-640,000 KM)		



Electronic Tools.

INSITE™ – For years, Cummins INSITE software has been making it easy to troubleshoot, repair and service our electronic engines through easy-to-follow steps on your computer. Multiyear subscriptions are now available out to 12 years.



Cummins Electronic Parts Catalog (CEPC) – CEPC turns your computer into a Cummins service parts topic center. Virtually every fact you'll want to know about your ISM will be here, including part numbers, diagrams, options and engine information. Simple to learn and easy to use for faster answers to questions and increased productivity.

QuickServe® Online – Gives rapid access to parts and service information for over eight million engine serial numbers. Part numbers and diagrams, maintenance information and service bulletins, warranty details and more are available every minute of every day via the Internet.

Gearing Recommendations.

The 2007 ISM is designed to deliver outstanding performance in the 1200-2100 rpm range. It produces 450 hp in motorcoach applications, with up to 1550 lb-ft of torque, and up to 330 hp in transit bus applications, with up to 1150 lb-ft of torque for automatic transmissions. Matched correctly, it will result in an optimum balance of performance and fuel economy. Log on to www.powerspec.cummins.com for more information on gearing recommendations, as well as parameter descriptions and recommendations.

Warranty Coverage.

Every Cummins ISM urban transit and motorcoach engine comes with a standard 2-year/unlimited-mileage warranty with 3-year/300,000-mile (482,804 km) major components coverage, whichever occurs first.



Four extended coverage options are also available, with 100% parts and labor coverage for 5 years/200,000 miles (321,869 km), 300,000 miles (482,804 km), 400,000 miles (634,738 km) or 500,000 miles (804,672 km) of additional protection. This includes everything except maintenance items. For additional details, ask to see Cummins Bulletins 3381278 and 3381312.

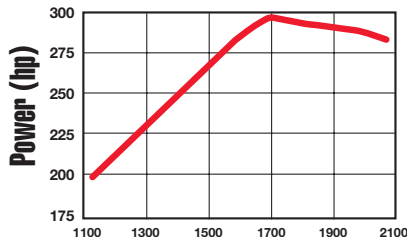
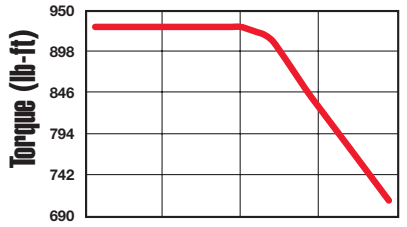
Every Question. Answered.

- Service Network – Cummins engines are backed by nearly 3,500 authorized Cummins parts and service outlets in North America.
- Customer Assistance Center – Call the Cummins specialists for technical assistance, service locations and product literature at 1-800-DIESELS (1-800-343-7357).
- Cummins E-Mail – For online assistance to Cummins-related questions, click on the Contact Us link in the header at everytime.cummins.com.
- Cummins Online Registration – Register all your Cummins engines quickly and easily at everytime.cummins.com to ensure quality parts and service for your engine.

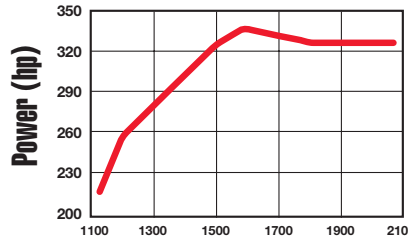
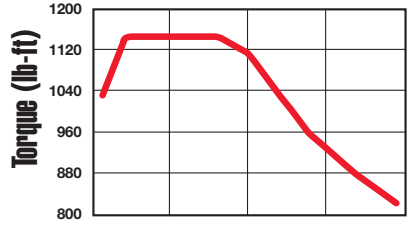


ISM URBAN TRANSIT BUS AND MOTORCOACH TORQUE AND POWER CURVES.

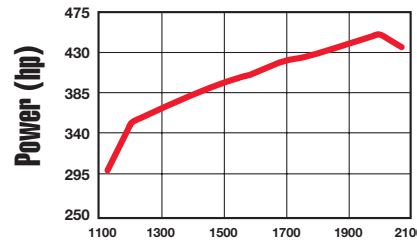
280 HP/925@1200 FR 20135



330 HP/1150@1200 FR 20134



450 HP/1550@1200 FR 20108C



Cummins is a pioneer in product improvement. Thus specifications may change without notice. Illustrations may include optional equipment.



Cummins Inc.
Box 3005
Columbus, IN 47202-3005
U.S.A.

Phone: 1-800-DIESELS (1-800-343-7357)
Fax: 1-800-232-6393
Internet: everytime.cummins.com

C Brake is a trademark of Cummins Inc. Jacobs is a registered trademark of Jacobs Vehicle Systems.

Bulletin 4103685 Printed in U.S.A. Rev 4/06
©2006 Cummins Inc.